

How to backup footage using the Schedule backup software.

1. backup operation

First: click [Config](#) and go to [Device Manage](#) to add some devices such as DVR and NVR, you can click [Search device](#) and choose an appropriate device for you to backup files. Then you can see some information in the [Device Info List](#).

The screenshot shows the 'Device Manage' window. At the top, there's a 'Device Info List' section with a user dropdown set to 'admin - Admin' and buttons for 'Search device', 'Import', and 'Export'. Below this is a table with columns: SN, Title, Desc, DDNS Enable, DDNS IP, DDNS Port, and D. The table contains three rows of device information.

SN	Title	Desc	DDNS Enable	DDNS IP	DDNS Port	D
1	10.15.5.124	10.15.5.124	No			
2	10.15.5.125	10.15.5.125	No			
3	10.15.5.149	10.15.5.149	No			

Below the table is the 'Device Information' section with various input fields for configuring a device, including Title, Desc, IP, Port, Model, User, Password, Login Type, DDNS Server Information, and Device Registration Name. Buttons for 'Add', 'Update', 'Delete', 'OK', and 'Cancel' are at the bottom.

Second: click [Config](#) and go to [Backup Plan](#) to backup files which you need in the front end. You can click [Add](#) to edit the backup project for specified recording time and project run time.

The screenshot shows the 'Backup Project Edit' window. It features a 'Weekday' section with checkboxes for Monday through Sunday, all of which are checked. Below this is a 'Project Run Time' section with two time pickers set to '0:00:00' and '23:59:00'. A 'Multi Channel' button is also present. The 'Device' dropdown is set to '10.15.5.149' and the 'Channel' dropdown is set to 'Channel 1'. The 'Record' dropdown is set to 'One Day Ago'. At the bottom, there are 'OK' and 'Cancel' buttons.

Then you can see the information for what you added in the

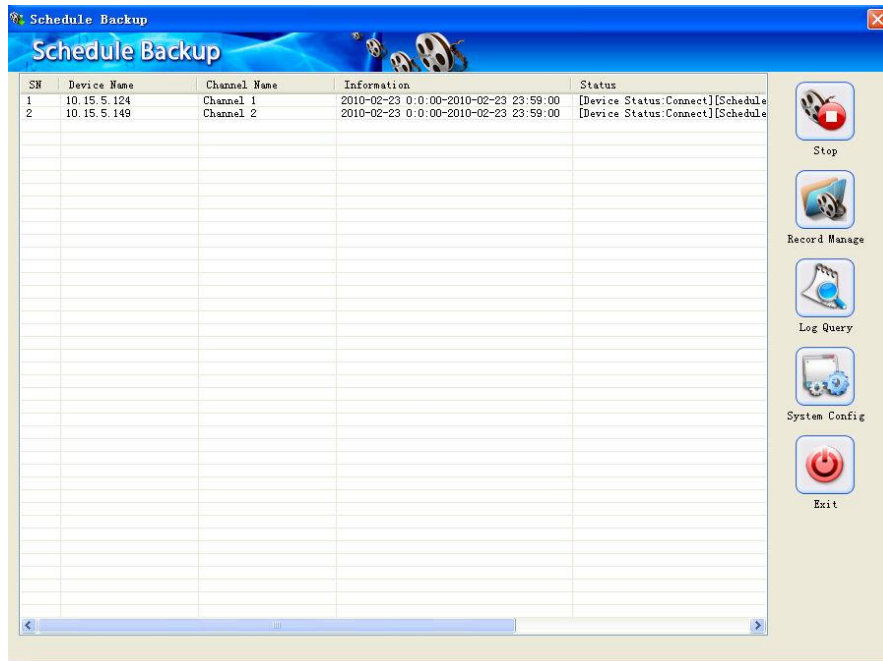
Backup Project

[illegible]

Third: click **Config** and go to **Option**, click **Add** to set **The Directory** where you want the footage. This can be shared a shared folder on a server.

[illegible]

Click **Start** then it will automatically backup files to the specified directory



Note: Auto Login Soft, Auto Start Soft, & Auto Start Plan Options must be selected if you want the software to start when the computer restarts, and the based on the schedule of the “Project Run Time”