

7 Quick Configuration Tool

7.1 Overview

Quick configuration tool can search current IP address, modify IP address. At the same time, you can use it to upgrade the device.

Please note the tool only applies to the IP addresses in the same segment.

7.2 Operation

Double click the “ConfigTools.exe” icon, you can see an interface is shown as in Figure 7-1.

In the device list interface, you can view device IP address, port number, subnet mask, default gateway, MAC address and etc.

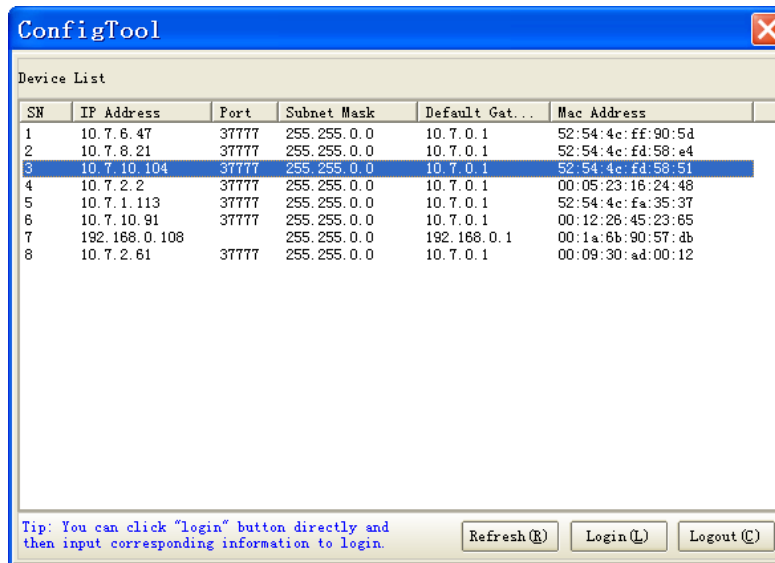


Figure 7-1

Select one IP address and then right click mouse, you can see an interface is shown as in Figure 7-2.

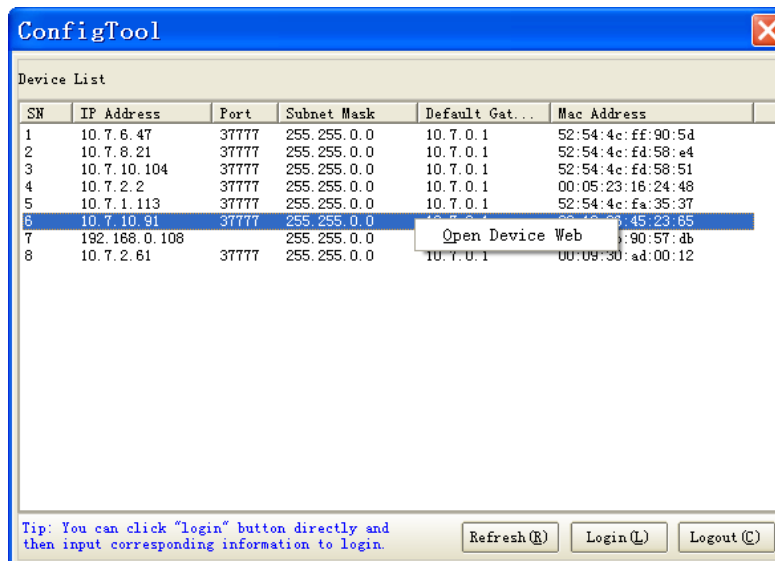


Figure 7-2

Select the “Open Device Web” item; you can go to the corresponding web login interface. See Figure 7-3.

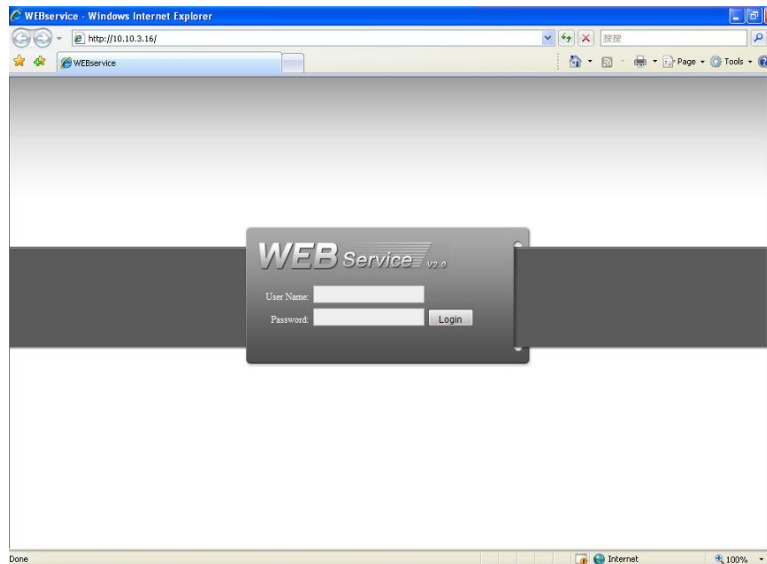


Figure 7-3

If you want to modify the device IP address without logging in the device web interface, you can go to the configuration tool main interface to set.

In the configuration tool search interface (Figure 7-1), please select a device IP address and then double click it to open the login interface. Or you can select an IP address and then click the Login button to go to the login interface. See Figure 7-4.

In Figure 7-4, you can view device IP address, user name, password and port. Please modify the corresponding information to login.

Please note the port information here shall be identical with the port value you set in TCP port in Web Network interface. Otherwise, you can not login the device.

If you are use device background upgrade port 3800 to login, other setups are all invalid.

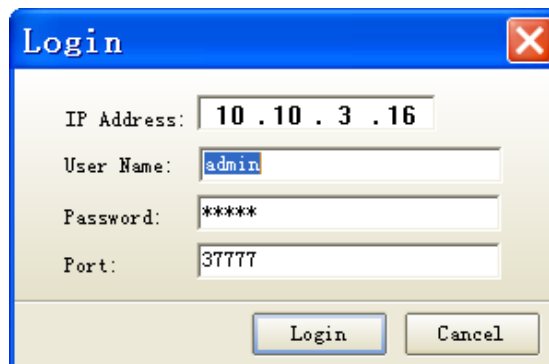


Figure 7-4

After you logged in, the configuration tool main interface is shown as below. See Figure 7-5.

Please refer to the *Quick Configuration Tool User's Manual* included in the resources CD for detail information.

The image shows a software window titled "ConfigTool" with a blue title bar and a red close button. The window is divided into two main sections: "General Parameter" on the left and "Network Parameter" on the right. The "General Parameter" section contains a checkbox for "DHCP Enable" (which is unchecked), and four text input fields for "IP Address" (10.10.3.16), "Subnet Mask" (255.255.0.0), "Gateway" (10.10.0.1), and "Mac Address" (52:54:4c:fa:43:6d). The "Network Parameter" section contains three tabs: "PPPOE", "System Information", and "System Upgrade". A "Return (C)" button is located at the bottom right of the window.

General Parameter	Network Parameter
<input type="checkbox"/> DHCP Enable	PPPOE
IP Address: 10.10.3.16	System Information
Subnet Mask: 255.255.0.0	System Upgrade
Gateway: 10.10.0.1	
Mac Address: 52:54:4c:fa:43:6d	

Return (C)

Figure 7-5